

# M600 Specification

Please complete this form and return it to your nearest GEMÜ office or to the address listed below!

**Operating pressure:** \_\_\_\_\_ bar

**Medium temperature:** \_\_\_\_\_ °C

**Multi-port valve material:**

- 1.4435
- 1.4435 BN 2 (ΔFe < 0.5%)
- 1.4539
- Other \_\_\_\_\_

**Diaphragm material:**

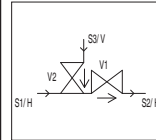
- EPDM Code \_\_\_\_\_
- PTFE Code \_\_\_\_\_
- Other \_\_\_\_\_

**Surface finish of M600 multi-port valve:**

- 1502 (Ra) ≤ 0.8 μm
- 1503 (Ra) ≤ 0.8 μm electropolished
- 1507 (Ra) ≤ 0.6 μm
- 1508 (Ra) ≤ 0.6 μm electropolished
- 1536 (Ra) ≤ 0.4 μm
- 1537 (Ra) ≤ 0.4 μm electropolished
- 1527 (Ra) ≤ 0.25 μm
- 1516 (Ra) ≤ 0.25 μm electropolished

**Quantity:**

**Example:**



Please draw functional diagram.

**Note:** Please observe correspondence of table and functional diagram.

Spigot: S1, S2, ...

Preferred mounting position: Horizontal/Vertical

Flow direction (medium): →

Draining direction: →

Valve seat:

Spigot		Pipe connection			Operator		Other
Spigot no.	DN	s[mm]	ød(a)mm]	Code	Operator type	Control function	Comment / accessories
S1							
S2							
S3							
S4							
S5							
S6							
S7							
S8							
S9							
S10							
S11							
S12							

The technical details of each enquiry will be checked by GEMÜ.

**Contact (GEMÜ):** \_\_\_\_\_  
**Customer:** \_\_\_\_\_  
 Department: \_\_\_\_\_  
 Address: \_\_\_\_\_  
 Phone: \_\_\_\_\_ Fax: \_\_\_\_\_

Please do not write here!

Version: \_\_\_\_\_  
 990  
 LZ: \_\_\_\_\_  
 Price\*: \_\_\_\_\_

\*€/body